

Regent Place Wimbledon, SW19 8RP

Offers In Excess Of £700,000 Freehold

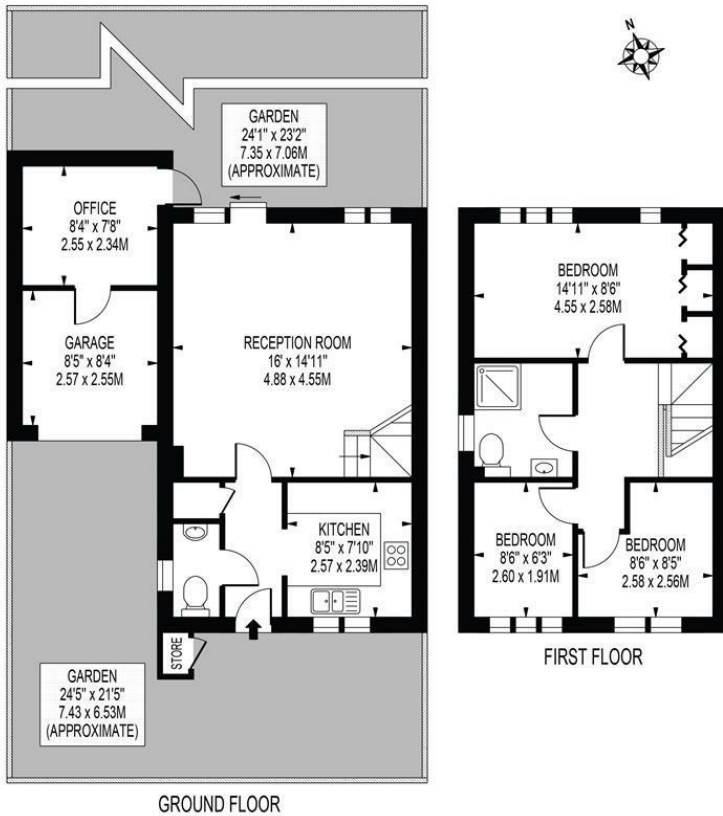


An extremely well presented three bedroom link detached modern family house with off-street parking and a garage, situated within a private development a short distance from Wimbledon town centre. The property boasts a kitchen with integrated appliances, downstairs W/C and a spacious open-plan reception/dining room with doors leading out to a well maintained garden and home office. Three bedrooms and a wonderful family bathroom comprise the first floor, with copious storage in the loft. Positioned in the sought after 'Poets' area of SW19, on the doorstep of Haydons Road Thameslink and close to both Wimbledon Mainline and Northern Line tube. An early viewing is highly recommended.

REGENT PLACE

APPROXIMATE TOTAL INTERNAL FLOOR AREA : 888 SQ FT - 82.50 SQ M
(INCLUDING GARAGE & OFFICE)

APPROXIMATE GROSS INTERNAL FLOOR AREA OF GARAGE : 71 SQ FT - 6.55 SQ M
APPROXIMATE GROSS INTERNAL FLOOR AREA OF OFFICE : 64 SQ FT - 5.97 SQ M

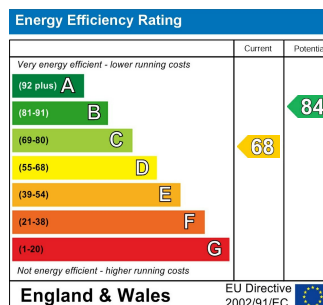


FOR ILLUSTRATION PURPOSES ONLY

THIS FLOOR PLAN SHOULD BE USED AS A GENERAL OUTLINE FOR GUIDANCE ONLY AND DOES NOT CONSTITUTE IN WHOLE OR IN PART AN OFFER OR CONTRACT. ANY INTENDING PURCHASER OR LESSEE SHOULD SATISFY THEMSELVES BY INSPECTION, SEARCHES, ENQUIRIES AND FULL SURVEY AS TO THE CORRECTNESS OF EACH STATEMENT. ANY AREAS, MEASUREMENTS OR DISTANCES QUOTED ARE APPROXIMATE AND SHOULD NOT BE USED TO VALUE A PROPERTY OR BE THE BASIS OF ANY SALE OR LET.



- Link Detached Freehold Family Home
- Three Bedrooms
- Off-Street Parking for Two Cars
- Garage
- Home Office
- Located in a Private Development
- Close Proximity to Multiple Transport Links
- Freehold (Annual costs for Maintenance of Regent Place approx. £200)
- EPC Rating D
- Council Tax Band E



For Free Mortgage Quote and Best Mortgage Rates, call an Ellisons Mortgage Advisor on 020 8944 9494



Although these particulars are believed to be correct, their accuracy is not guaranteed and they do not form part of any contract.

Celebrating 30 years of successful Sales and Lettings in Merton

